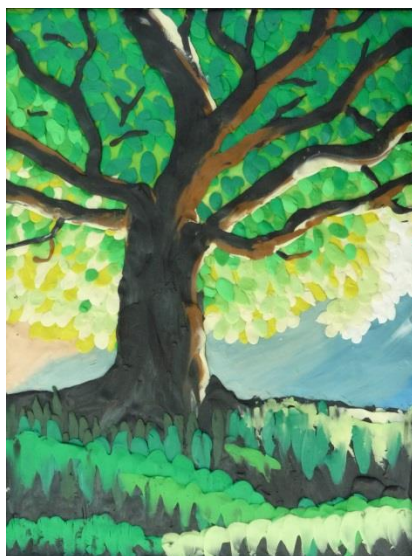


Paint with modeling clay

Draw a pattern on a very rigid cardboard.
 Using a long strand of modeling clay follow the path of your pattern, press down on the strand modeling clay to make it stick to the rigid cardboard.
 Apply either small balls or small patties of modeling clay inside and outside of your pattern.
 When placing the pieces of modeling clay, press down on them so that they stick to the cardboard.
 The colors will mix easily, giving you access to an infinite range of colors!



Required matériel BB

Product code

Modeling clay

(View catalogue)

Canvas board

(View catalogue)