

KLEE'S CASTLES

Preschool technical sheet

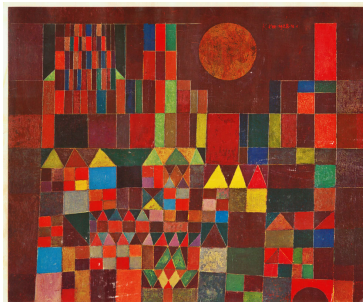


Materials:

- Tempera paints Miracolor or Corello+
- Gouache Demco fluo
- Brushes (série 855, série 295...)
- Top quality construction paper black 1355031 or coloured 1354927
- Polystyrene trays 1205913
- Blocks to print with (foam blocks, wood blocks, megablocks...)
- Optional: Soft paint rollers 1421544
- Optional: coloured pencils for accents 3140712

Steps:

1. Choose your colored construction paper (I recommend black).
2. Pour your liquid tempera paints on a polystyrene tray (spread evenly with a brush).
3. Dip your block in the paint (you may also paint it with a brush or a roller).
4. Quickly print it on your paper.
5. Repeat to "build" your castle.
6. Once dry, you can add accents with coloured pencils.



Reference: Castle and Sun by Paul Klee (1928)

